



Enterprise Mobility



Communication



Connectivity



Security



IoT



Colocation & Cloud



Vodafone Idea Limited 2020 ©. This document may contain such as text, graphics, images and other material is created / issued by Vodafone Idea Limited or obtained in confidence ("Content") and are for informational purpose only. The content is not to be reproduced for commercial use or for any otherwise purpose in whole or in part, without the prior written permission of Vodafone Idea Limited. 'Vodafone' and 'Idea' are trademarks of the Vodafone Plc and Idea Cellular Limited renamed as Vodafone Idea Limited, respectively. Any products or services provided by Vodafone Idea Limited under the Trade Mark, Vi, its motion, logo, trade dress, static or moving depictions with each and every element thereof, is protected under existing trademark, copyright and all intellectual property rights available under law and are owned by Vodafone Idea Limited. The content contained in this publication is correct at the time of going to print and was derived from events/action taken by Vodafone Idea Limited. Such content may be subject to change, and services may be modified, supplemented or withdrawn by Vodafone Idea Limited without prior notice.
All services are subject to terms and conditions, copies of which may be obtained on request.

unearth the power of 5G-powered Industry 4.0

for smarter, safer operations with cutting-edge technology

Follow us on

www.MyVi.in/business



As India aspires to become a \$7Tn economy and the 3rd biggest economy by 2030, it must increase the manufacturing contribution to almost 25% of the GDP which is about \$2Tn. To fuel this long-term trajectory growth, aligned with our Hon'ble Prime Minister's Atmanirbhar program, digital coupled with Industry 4.0 is the road ahead.

Vi Business' 5G-powered Industry 4.0 solution spans from hardware and high-speed 5G connectivity to seamless data collection, processing, and advanced analytics.

This is all backed by telco-grade security and expert consulting services from our knowledge partner, Deloitte.

Our 5G-powered solutions seamlessly combine IoT, AI, and 5G to not only enhance operational efficiency but also to improve the speed, safety, security, and sustainability of business operations.

explore how we're breaking new ground with these 5G-powered Industry 4.0 solutions



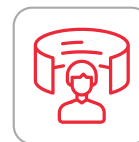
SkyWatch AI Vision



TunnelEye Edge Analytics



SmartGuard AI



AugmentXR Training



ControlHub



SkyWatch AI Vision

Vi's 5G-powered, AI/ML-driven drone solution designed for advanced analytics in industrial operations, enables better situational awareness and faster decision-making & response management. It leverages high-resolution cameras and other sensors to capture millions of data points - providing rapid and accurate estimation and monitoring of critical parameters.

what does SkyWatch AI Vision enable?

- **Excavation Planning & Monitoring in Mining Operations:** Optimises excavation accuracy and safety with continuous monitoring - including mineral estimation, boulder sizing, landslide, and blasting planning.
- **Landscape & Elevation Mapping:** Precise height, depth, and width assessment for drilling, vehicle movement, digging, and excavation.
- **Inventory Stock Keeping:** Quick and accurate assessment of industrial inventory.
- **Emergency Response Management:** Detects accidents, hazards, and gas leaks with minimal false alarms, enabling rapid response.
- **Aerial Surveillance:** Continuous monitoring of operations, worker and assets.

how does this change the game for business?

- Up to **100x faster** operational efficiency.
- Up to **30% cost savings** for economic operations.
- Up to **30% reduction** in incidents for safer operations.
- Up to **20% reduction** in environmental impact for sustainable operations.

TunnelEye Edge Analytics

Our AI/ML enabled TunnelEye Edge Analytics solution offers enterprises real-time video analytics for improved security and operational efficiency, by incorporating edge computing. By leveraging 5G's high-speed connectivity and bandwidth, the solution supports advanced surveillance. To add to this, its real-time, high-definition video streaming with ultra-low latency offers continuously updated and clear visual feeds from remote and challenging environments.

what does TunnelEye Edge Analytics enable?

- **Emergency Response Management:** Real-time monitoring for faster emergency detection and response.
- **Unauthorised Access Control:** Enhanced security through surveillance to detect and prevent unauthorised entries.
- **Environmental & Safety Monitoring:** Continuous tracking of environmental conditions and safety protocols.
- **Equipment & Fleet Monitoring:** Remote monitoring of machinery and fleet to ensure efficiency and safety.
- **Remote Object Detection:** Real-time detection of objects in the path, to prevent machine failures or accidents.
- **Adherence to Safety Protocols:** Monitoring of PPE compliance and detection of unauthorised access in hazardous zones.



how does this change the game for business?

- Up to **30% reduction** in incidents with enhanced safety monitoring and faster response times.
- Up to **20% increase** in productivity and **15% cost** reduction for improved operational efficiency.
- Up to **40% improvement** in regulatory compliance with data-driven insights.



SmartGuard AI

This 5G-powered Smart Helmet revolutionises worker safety in high-risk environments like mining, construction, and more, providing advanced tools to ensure a safer and more efficient workplace. This innovative wearable is equipped with cutting-edge features aimed at addressing key safety concerns on-site. It helps not just with safety, but also offers real-time data & alerts for each worker that wears it.

This Smart Helmet is a revolutionary solution for industries where worker safety and operational efficiency are paramount.

what does SmartGuard AI enable?

- **Point of View (PoV) Live Streaming Camera:** Helmet-mounted camera for supervisors to remotely guide workers during tasks or emergencies.
- **Wireless Live Streaming via 4G/5G/Wi-Fi:** Transmits reliable video using available networks, even in remote locations.
- **Two-Way Communication:** Real-time communication between workers and supervisors for clear instruction and immediate feedback.
- **SOS Button with Geo-Fencing:** Emergency button shares exact location using geo-fencing for immediate assistance.
- **Video and Audio Recording:** The helmet can record video and audio, capturing critical moments on-site for future review, training, or troubleshooting.
- **Remote Monitoring/Inspection with AI & ML:** Enables supervisors to optimise workflows, detect hazards, and ensure safety compliance remotely.
- **Fall Detection/Altitude Sensor:** Detects falls or altitude changes to trigger timely emergency responses.

how does this change the game for business?

- Up to **40% reduction** in incidents with enhanced safety monitoring and faster response times.
- Up to **15% increase** in productivity for improved operational efficiency.
- Up to **30% reduction** in operational errors through more efficient communication.

AugmentXR Training

Augmented Reality (AR) training in an industry, enables workers to engage in immersive, lifelike simulations of industrial environments, allowing them to practice critical safety protocols and operational procedures without exposure to real-world risks. The use of AR technology creates a controlled yet realistic setting where employees can learn and rehearse complex tasks – in a safe space. This was designed to upskill workers by simulating real-life industrial environments, addressing the skills gap challenge.



what does AugmentXR Training enable?

- **Equipment Operations:** Ensures safe handling and maneuvering of machinery.
- **Hazard and Emergency Management:** Trains employees for high-risk situations like hazardous material handling or emergency response without real-world danger.



how does this change the game for business?

- **Realistic simulations** with consistent training quality
- **Significant reduction of training costs** by reducing downtime of expensive excavators
- **Data-driven analytics** of the equipment operators, under various stress conditions



ControlHub

Control Hub is an intelligent command centre for mining or manufacturing facilities, offering real-time monitoring and management of various operational activities ensuring that safety and efficiency are maintained across the site. By integrating data from surveillance systems, environmental sensors, and industrial equipment, this command center provides comprehensive, real-time oversight of the entire industrial operation.

It enables better coordination, automation, and data-driven decision-making for emergency response management & efficient operations.

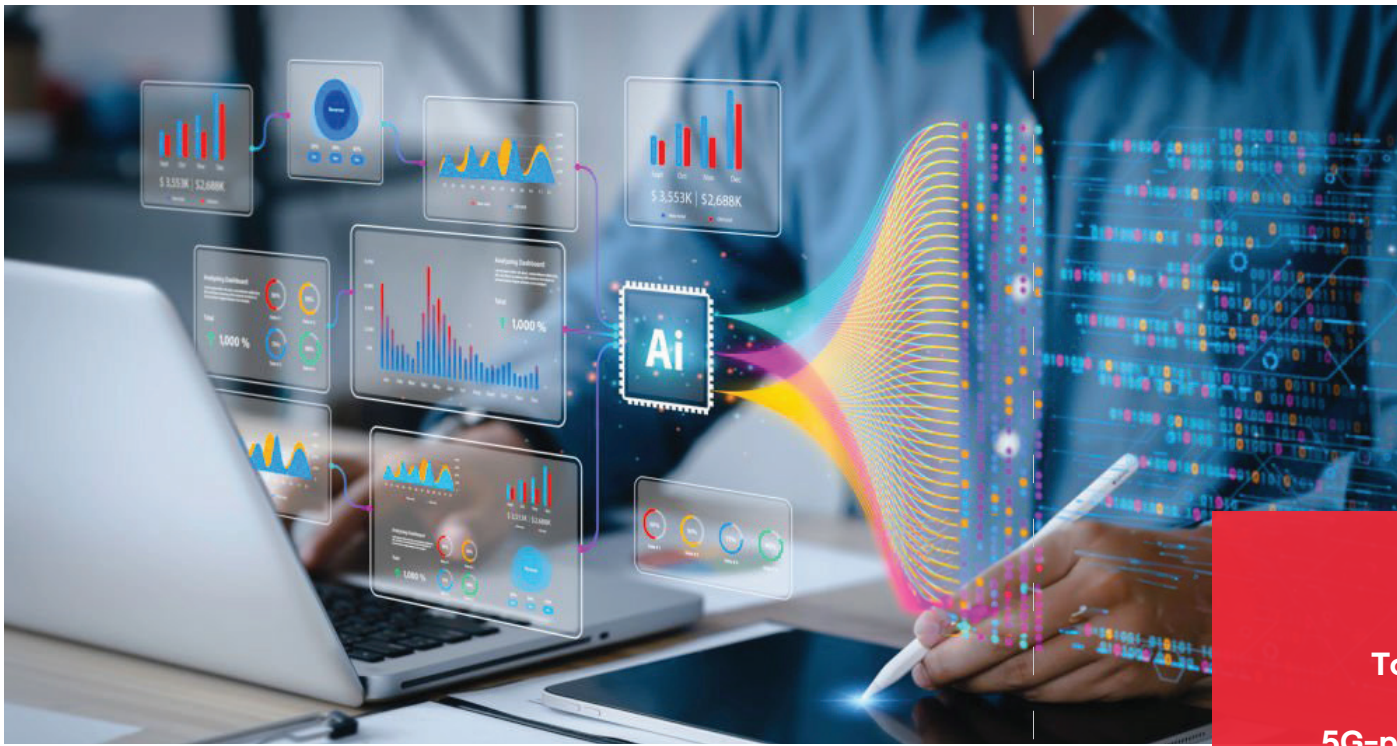
what does the ControlHub enable?

- **Emergency Response Coordination:** Enables swift and effective handling of safety incidents.
- **Remote Equipment Monitoring:** Tracks machinery performance continuously for optimal operations.
- **Worker Safety Oversight:** Monitors worker locations and conditions to prevent accidents.
- **Environmental Monitoring (Gas):** Tracking gas emissions to ensure safety & compliance.
- **Production & Manpower Planning Optimisation:** Boosts efficiency through resource and workforce optimisation.

how does this change the game for Business?

- Upto **30% reduction** in operational costs
- Upto **30% increase** in product quality
- Upto **20% increase** in asset efficiency
- Upto **10% increase** in safety and sustainability





To explore how your business
can benefit from our
5G-powered Industry 4.0 solutions,
reach out to us

☎ 1800 123 123 123 | www.myvi.in/business

